

# **aP58MC Copier**

## **User Guide**

**Aplus Integrated Circuits, Inc.**

[www.aplusinc.com.tw](http://www.aplusinc.com.tw)

[sales@aplusinc.com.tw](mailto:sales@aplusinc.com.tw)

## Introduction

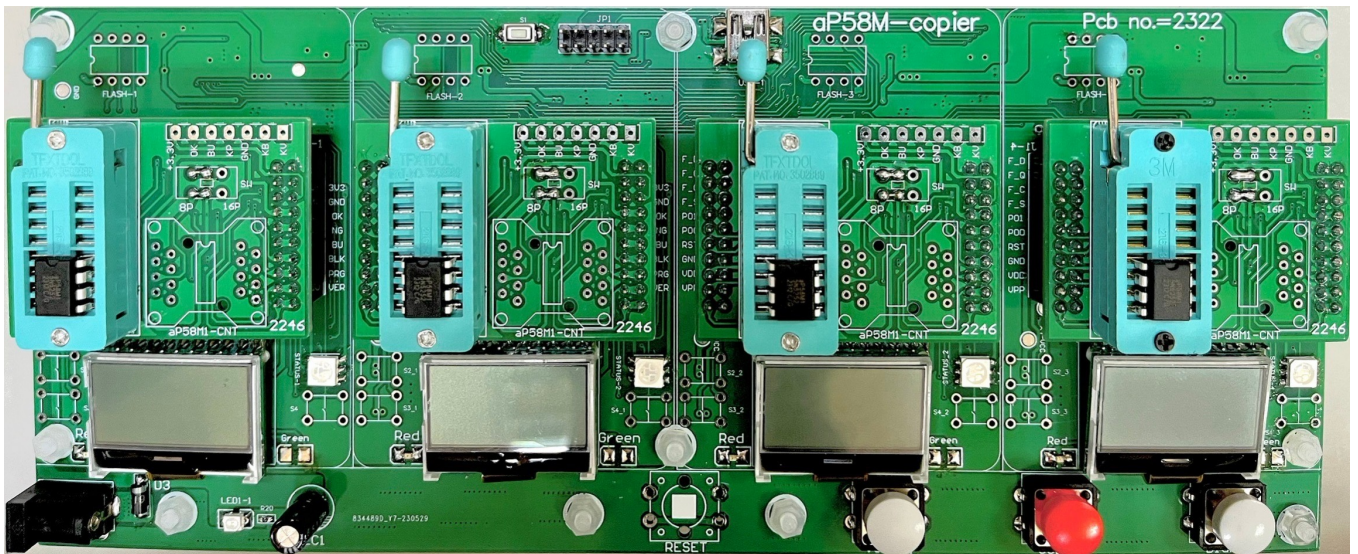
The aP58MC Copier is 1 to 4 pcs Stand-Alone Copier,

Part No:

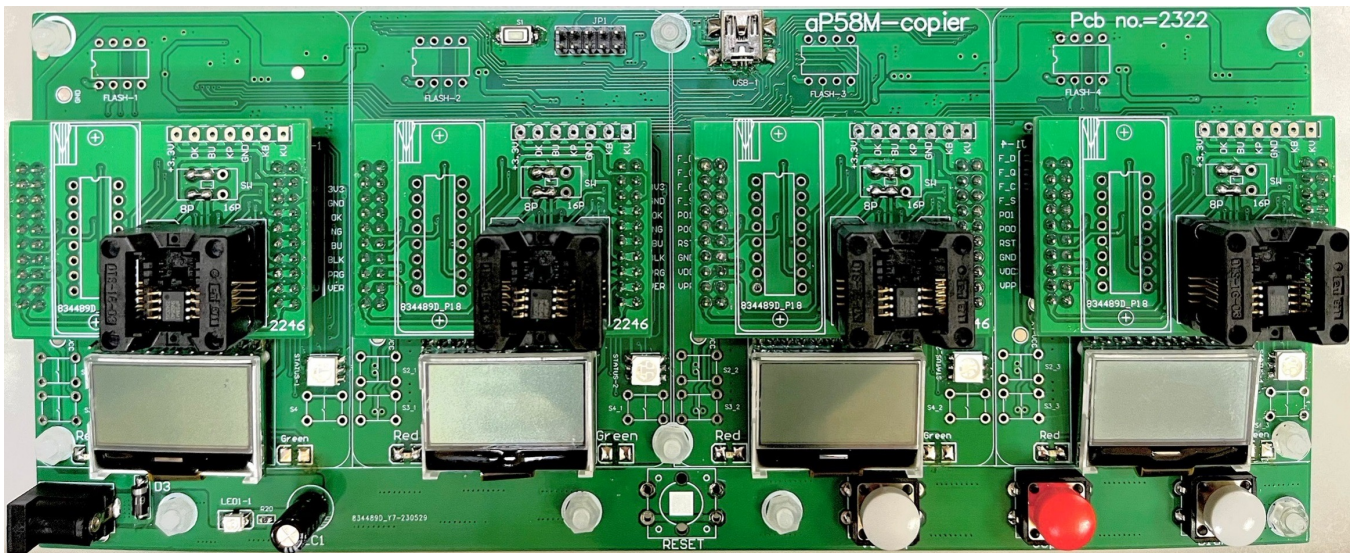
AP58MC-8D, applied for aP58M1 – DIP8 IC

AP58MC-8S, applied for aP58M1 – SOP8 IC

AP58MC-16S, applied for aP58M1 – SOP16 IC

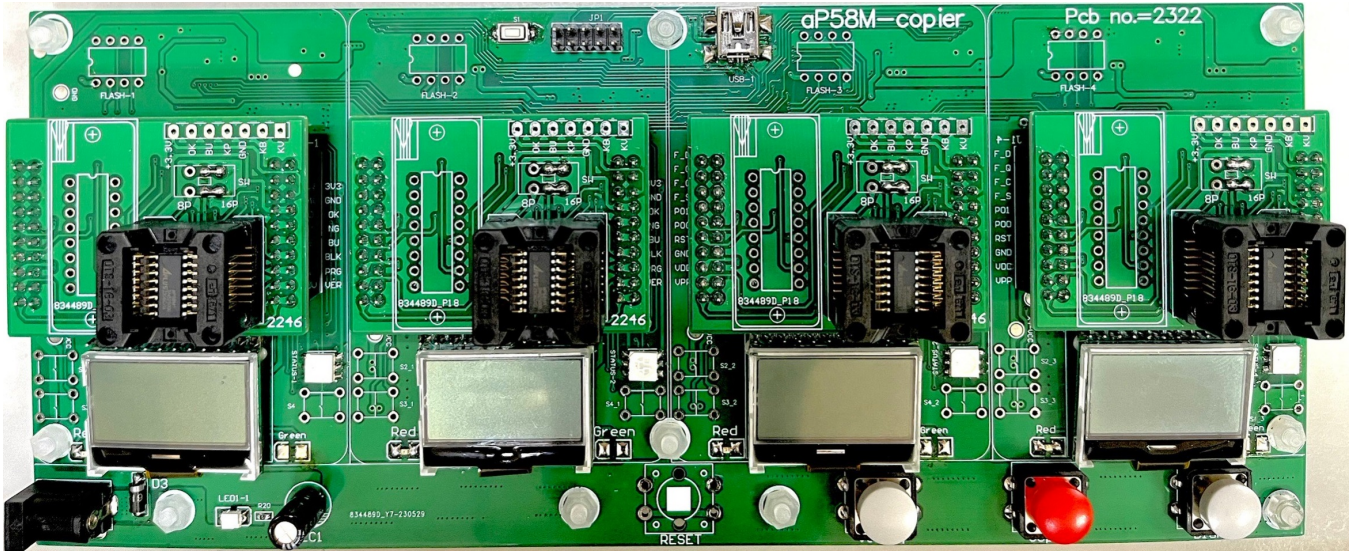


aP58MC-8D



aP58MC-8S





aP58MC-16S

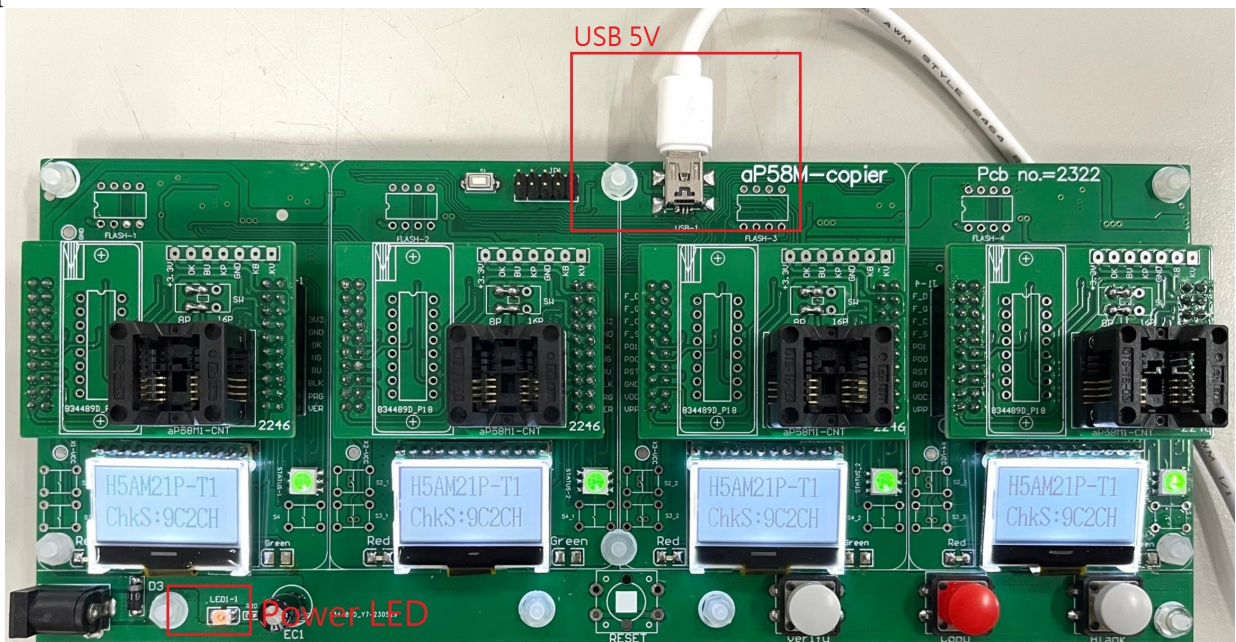
- Power :** 1. 5V USB to download Rom file
- 2. DC-JACK to off-line copy

**WARNING:**

**DO NOT CONNECT USB AND DC-JACK TOGETHER AT SAME TIME.**

## Operation Steps

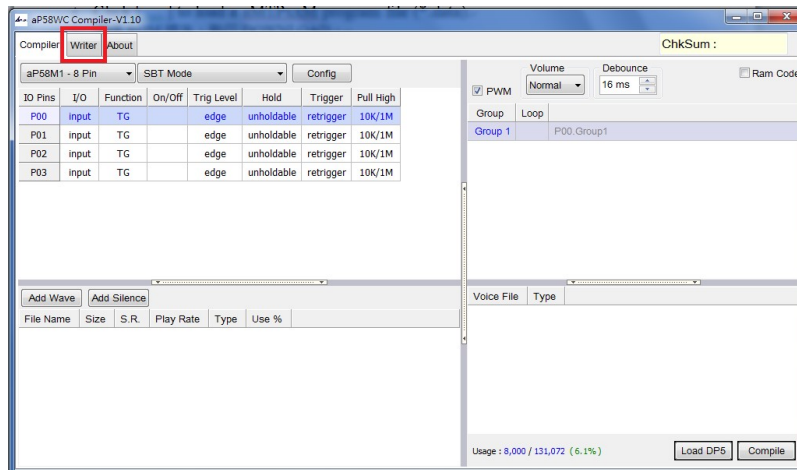
Step1. Connect 5V USB with PC. And Power Led will on.



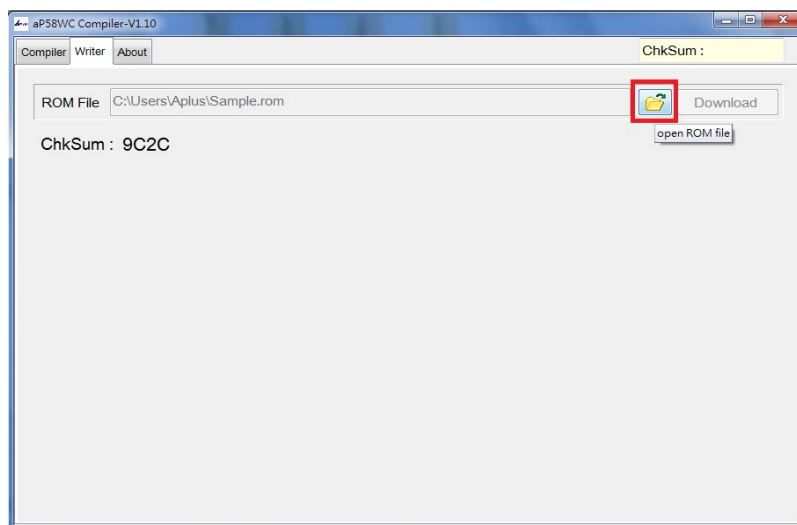
2.1 Double click aP58WC\_Compiler.exe



2.2 Click [ Writer ]

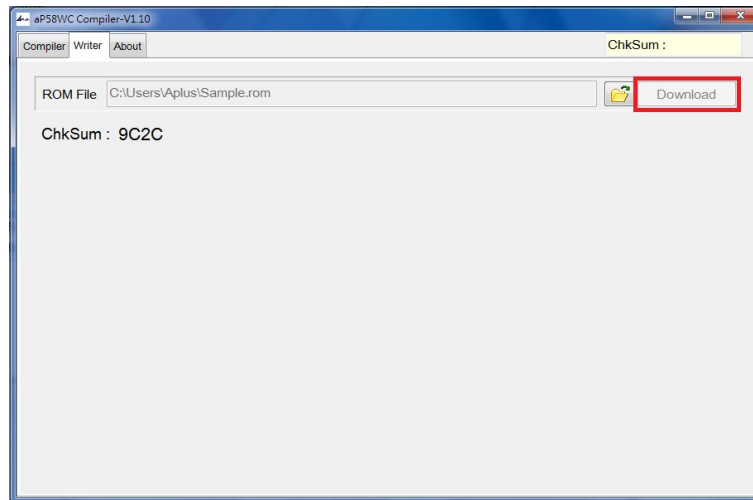


2.3 Open rom file to load (\*.rom). It display CheckSum

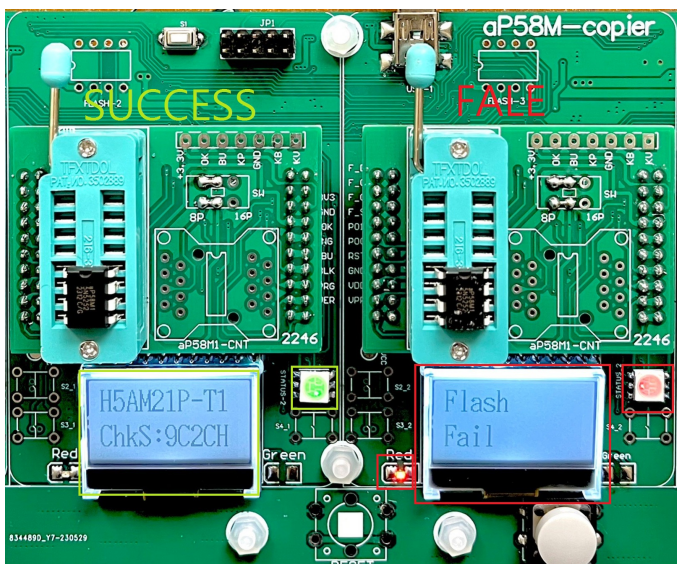
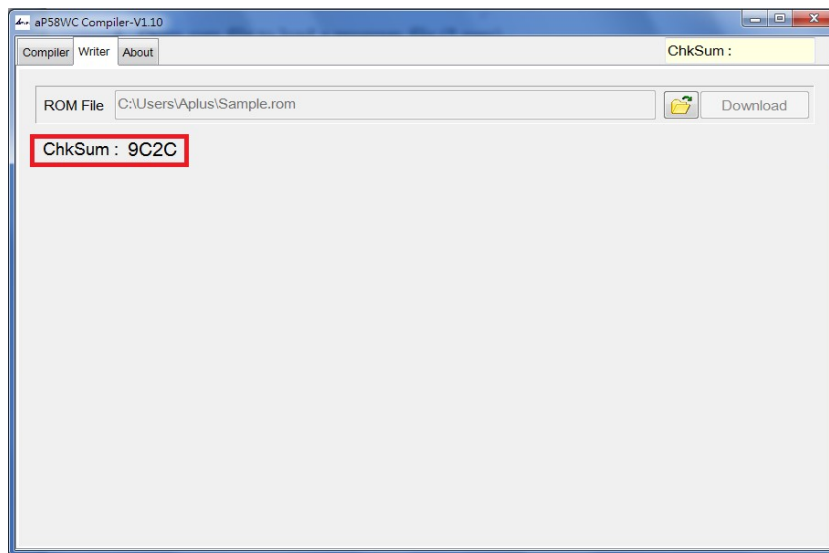




2.4 Click [ Download ] to program Rom file to AP58MC Copier

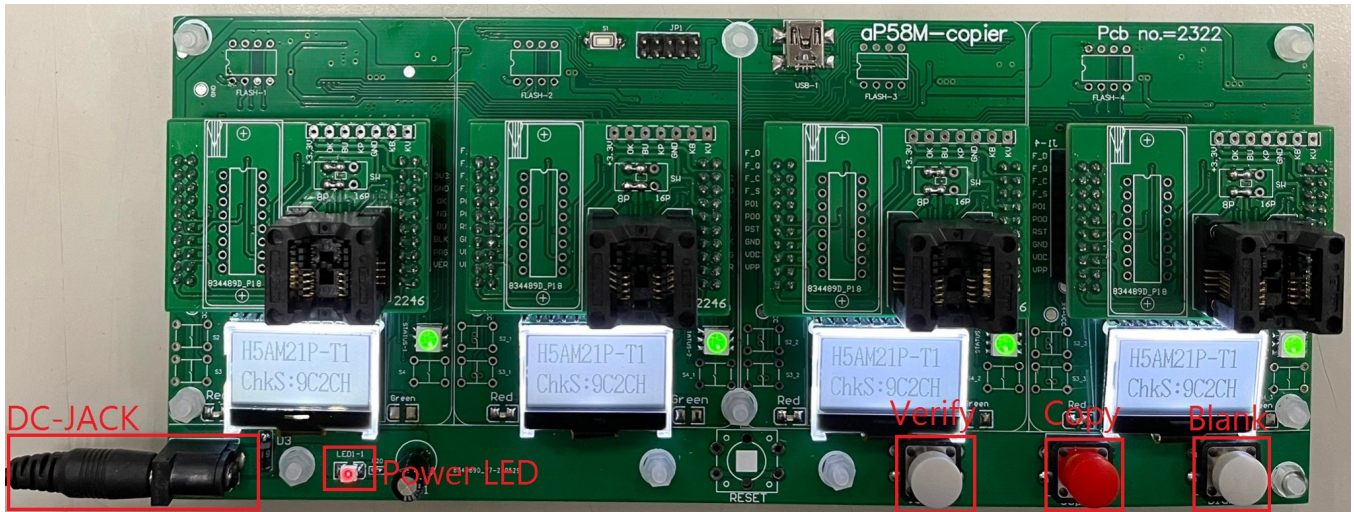


2.5 LCD will display CheckSum. Make sure the value is same as 2.3 CheckSum



And RGB will turn Green. If fail, it will turn Red. Each socket is independent programming. User still can use Green RGB socket to program

Step3. Remove USB and Link DC-JACK. And Power Led will on.



BLANK Button: Press the blank key, the RGB will on from Blue to Green. LCD display **blank OK** ◦

COPY Button: Press the copy key, the RGB will on from Blue to Green. LCD display **program OK** ◦

VERIFY Button: Press the verify key, the RGB will on from Blue to Green. LCD display **verify OK** ◦

## HISTORY

---

---

26/07/2023

aP58MC Copier User Guide.

---

---